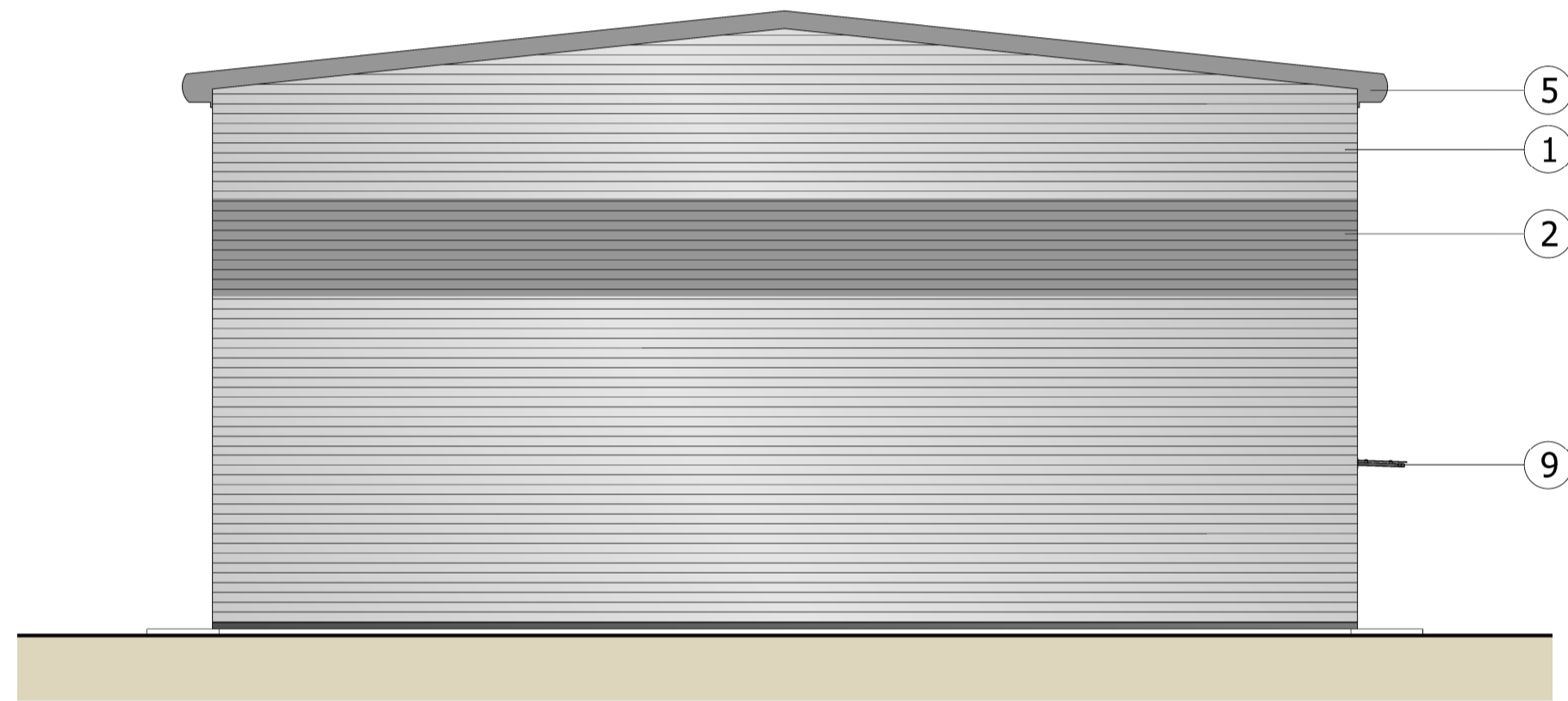


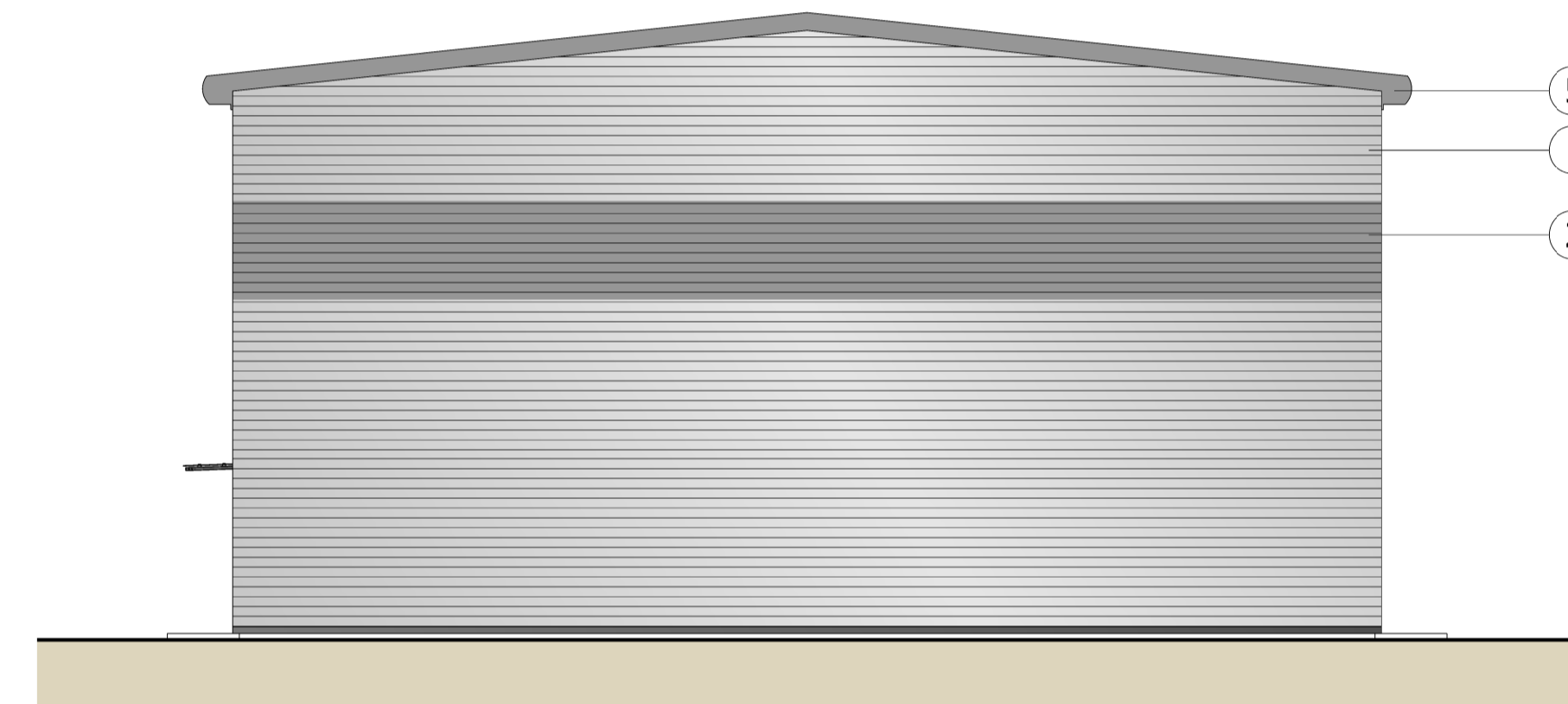
Subject to Statutory Approvals.



01 EAST ELEVATION
004 1:100

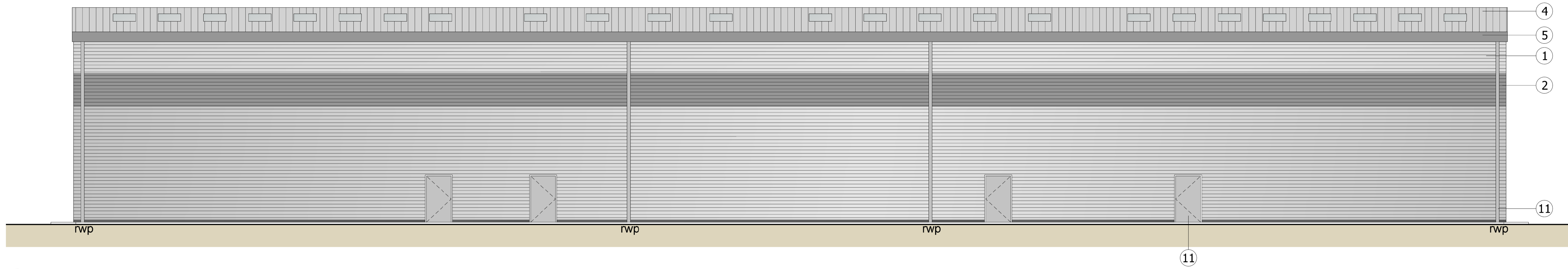


02 SOUTH ELEVATION
004 1:100



03 NORTH ELEVATION
004 1:100

KEY	
①	Horizontally laid sinusoidal profiled wall cladding Twintherm by CA, Ref: CA Sinu 19 Finish/Colour: Colourcoat Prisma Metallic Silver (RAL 9006)
②	Horizontally laid sinusoidal profiled wall cladding Twintherm by CA Finish/Colour: Colourcoat Prisma Grey Aluminium (RAL 9007)
③	Sectional overhead vehicle doors Finish/Colour: Colourcoat Silver Metallic (RAL 9006)
④	Trapezoidal roof panel Twintherm by CA, Ref: CA32 (1000R 0.7mm thick) Finish/Colour: HPS200 Albatross
⑤	Concealed gutter: 0.7mm secret fixed steel fascia & soffit Finish/Colour: Colourcoat Prisma Grey Aluminium (RAL 9007)
⑥	0.7mm steel signage panel Finish/Colour: Polyester powder coat - Anthracite (RAL 7016)
⑦	Aluminium curtain walling Senior SF52 system, min u-value: 1.58 WM ² /K average Finish/Colour: Polyester powder coat - Anthracite (RAL 7016)
⑧	Glazed entrance door with full height pull bar Finish/Colour: to match curtain walling
⑨	Glazed canopy
⑩	Factory finished painted metal personnel door Finish/Colour: Colourcoat Silver Metallic (RAL 9006)
⑪	Rainwater pipe Finish/Colour: to match cladding behind
L	Look-a-like panels - obscured glass
A	Insulated aluminum spandrel panels



04 WEST ELEVATION
004 1:100

Rev	Description	Chk	Date
	Peer House 8 -14 Verulam Street London WC1X 8LZ tel +44(0)20 7400 2120 enquiries@cornisharchitects.com www.cornisharchitects.com		

cornisharchitects



Project Title:
**LINESIDE
LITTLEHAMPTON**

Drawing Title:
ELEVATIONS

Drawing Status:
TOWN PLANNING

0	1	metres	8
Drawn By:	Scale:	Date:	Chk'd By:
R P	1:100 @ A1	06/08/2019	S M

Drawing No.
19005 - TP - 004